



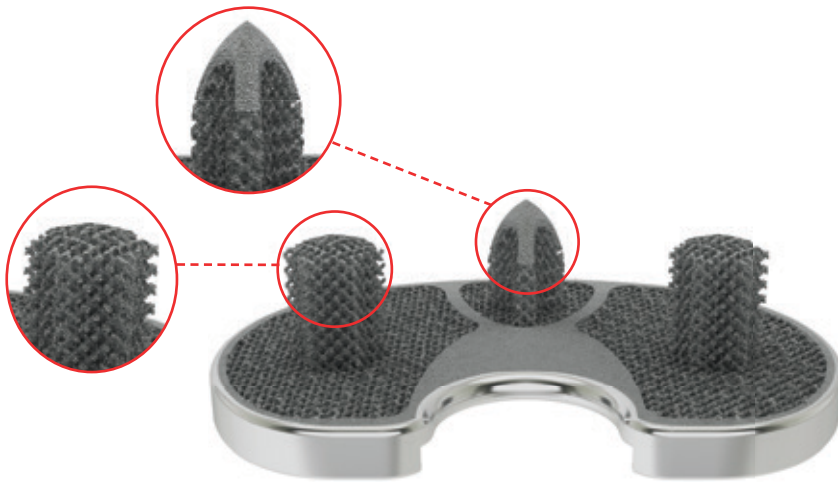
Physica T *T* Tibial Plate

- + *Optimized* **Design**
- + *Reliable* **Fixation**
- + *Bone* **Preserving**



Physica TT Tibial Plate

Optimized **DESIGN** (1, 2, 3, 4)



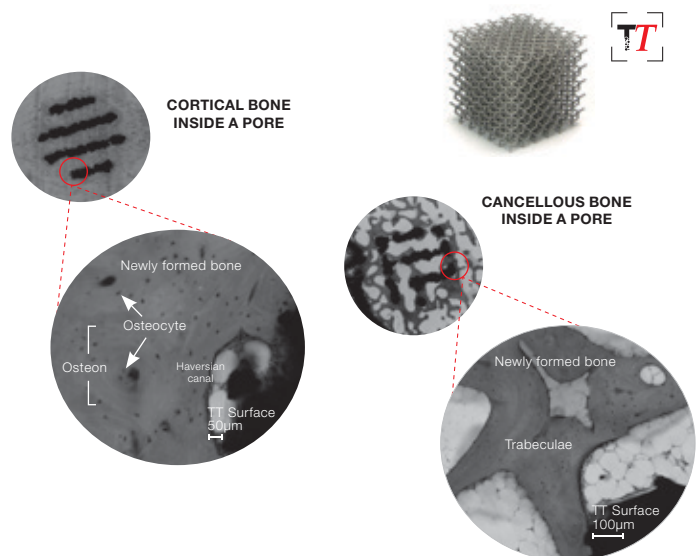
- + Design created using **scans of real patients** with osteoarthritis who were awaiting TKA to **increase primary stability** ⁽¹⁾
- + 10 sizes as per cemented tibial plate and **compatible** with full Physica system range (KR, PS, CR, LMC)
- + **1 spike and 2 pegs**

Reliable **FIXATION** (5-19)

- + **Bone ingrowth** and **Long Term Fixation** thanks to the TT, Trabecular **Titanium** which favours bone formation
 - **87%** bone in-growth in **cortical** bone ^{(5)*}
 - **68%** bone in-growth in **cancellous** bone ^{(5)*}.

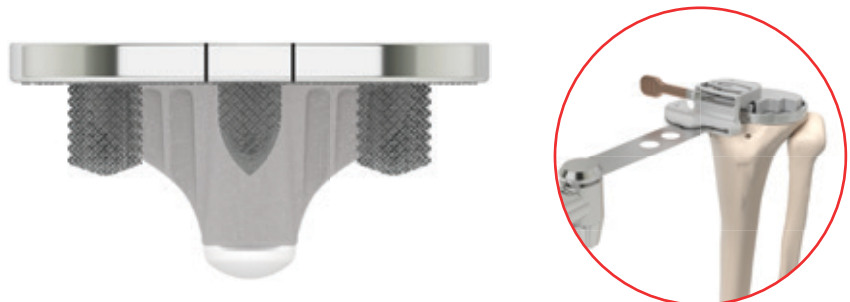
**in sheep models*

- + Increased **Primary Stability** and Secondary **Biological Fixation**
- + More **flexible** compared to a cemented keeled design to **prevent stress shielding** and **promote osteointegration**



Bone **PRESERVING**

- + **No need for central keel** thanks to the optimised design
- + **Reduced volume** compared to the cemented tibial plate
- + **Dedicated instrument** that allows for a guided **removal**



This document is not intended for circulation, publication or distribution to the public.
It is supplied for the exclusive use of Healthcare Professionals.



Bibliography